

- PENDANTS: nineteen
- MOUNTING: white powder coated round canopy 501mm (20") in diameter x 53mm (2") deep
- LAMPING: 1.5w LED or 20w xenon
- CABLE: adjustable. 3000mm (10') standard / up to 24600mm (80') maximum
- MATERIALS: blown glass, braided metal coaxial cable, electrical components, swag hooks, aircraft cable, white powder coated canopy
- WEIGHT: approximately 40kg (88lb)
- POWER SUPPLIES: integral, included (remote mount recommended)

DESCRIPTION

28.19 is a cluster configuration of nineteen 28 pendants hung from a round canopy. The drop lengths of the pendants are randomized between a client specified range of heights to variously cluster and scatter. This fixture is designed to be horizontal, meaning that the pendants don't hang directly below, but instead trail off across a space, around a corner or simply deviate from their gravitational directive. As such, this fixture is designed to be hung from any number of optional swag points mounted elsewhere from the canopy.

Standard 28s are made with clear glass exterior spheres and milk white interior lamp holder cavities. 28s are possible with infinite versatility in colour compositions, sizes and shapes.

NOTES

- + Purchase replacement lamps online at www.bocci.ca/shop/bulbs
- + Unless otherwise noted when ordering, all fixtures will be outfitted to be xenon compatible
- + As an alternative to integral power supplies, Bocci recommends mounting power supplies remotely in an easily accessible and hidden location for ease of long-term maintenance.
- + Aircraft cable lengths are adjustable on site - 3000mm (10') is the standard maximum. Drop lengths specified in 3m/10' increments and are cut to length on site with steel cable cutters (cutters not supplied).

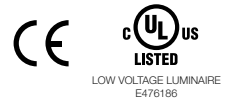
US Patent # D687,740
EU Patent # 001695834-001 to 004

Made in Vancouver, Canada

Vancouver
sales@bocci.ca
www.bocci.ca

Berlin
europe@bocci.ca
www.bocci.ca

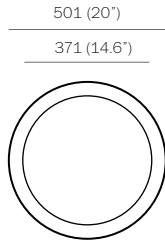
approx 40kg (88lb)



CLUSTER

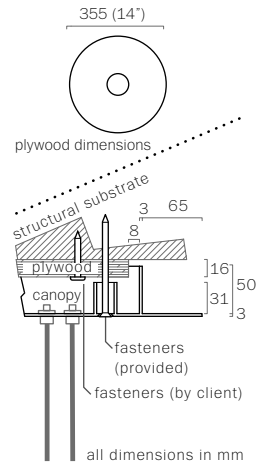
28.19

Design by Omer Arbel
PRODUCT SPECIFICATION



1

Measure and mark the light fixture canopy position on the ceiling



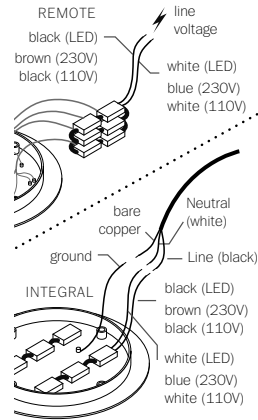
2

Note: The client is responsible for providing a robust 16mm (5/8") plywood backing or wood blocking to securely anchor to the structural substrate.

Connections from the plywood to the structural substrate are the client's responsibility.

Measure the plywood so that it fits within the canopy side walls (refer to detail above).

Anchor the plywood backing to the structural ceiling substrate.



3

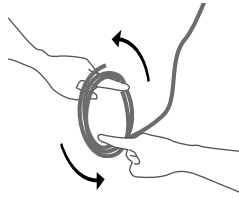
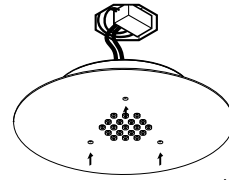
Connect power supplies to line voltage.

Xenon (110V) or LED: connect the black wire to black and white wire to white wire.

Xenon (230V): connect black wire to brown wire and white wire to blue wire.

For the ground connection, connect the green wire with yellow stripe to the bare copper wire or green wire in the junction box.

Note: Bocci strongly recommends mounting power supplies remotely in a close, accessible and hidden location for ease of long term maintenance. Installation to be done by certified personnel to insure compliance with the code.



4

Anchor canopy into the plywood backing using the fasteners provided.

Turn power to fixture on.

Very carefully uncoil the braided coaxial cable in a spool like manner. Insert your index fingers into opposite sides of the roll then rotate your fingers around each other to unroll the coaxial cable.

Use patience: allow the cable to uncoil completely to avoid kinks.

5

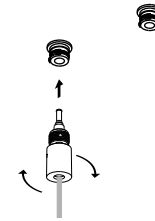
Bocci lamps are included. Plug the lamp into the socket. Do not touch the lamp with your bare hands.



6

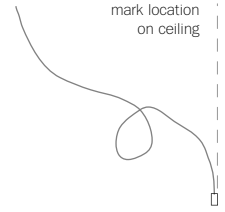
Each pendant terminates in a "headphone jack" type connector, which plugs into a receiving receptacle in the canopy. Clients are encouraged to compose their own pendant configuration on site, thus creating a truly unique fixture. After plugging in each pendant, turn the threaded sheath into place by hand ensuring that it is adequately tightened. Tools are not required.

Check that each lamp is working properly as you go along by keeping power to the fixture on and lamps plugged in.



7

Mark a point directly above the pendants desired location and screw.



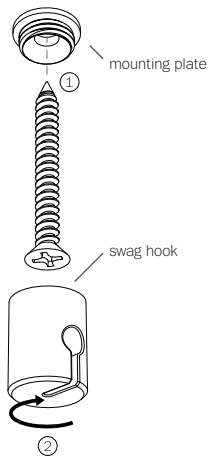
CLUSTER

28.19

Design by Omer Arbel
PRODUCT INSTALLATION INSTRUCTIONS

© 2019, Bocci Design and Manufacturing Inc. All rights reserved. Any inquiries should be directed to: info@bocci.ca

BOCCI

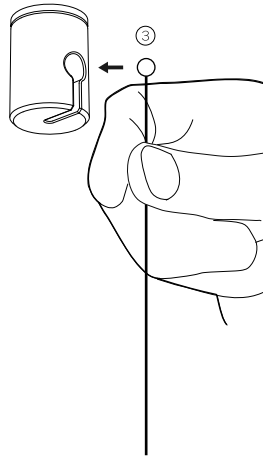


8

Ensure that the ceiling at the swag location is strong enough to hold 2kg (5lbs) before attaching swag hook with the provided screws.

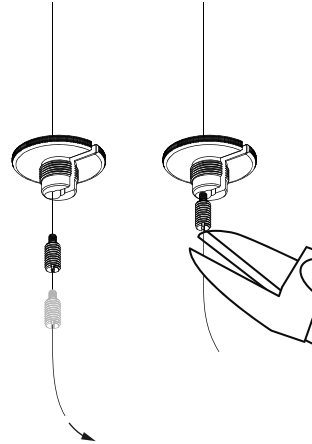
Set the screws (provided) into an appropriate anchor (not provided).

Thread the swag hook on to the mounting plate, ensuring all the threads are engaged.



9

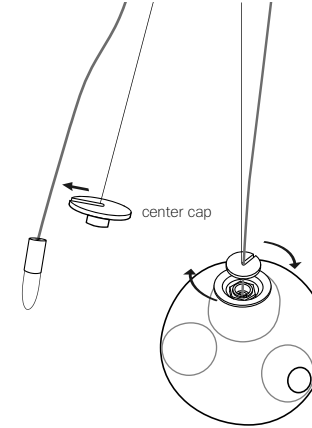
Slide the ball end of the aircraft into the slot on the swag hook. Give this a pull test, make sure that the ball is seated.



10

Feed the aircraft cable into the cable gripper. Slide the cable gripper into channel housing of center cap. Pull the aircraft cable and slide the cable gripper to adjust the height.

Cut the aircraft cable using aircraft cutters.



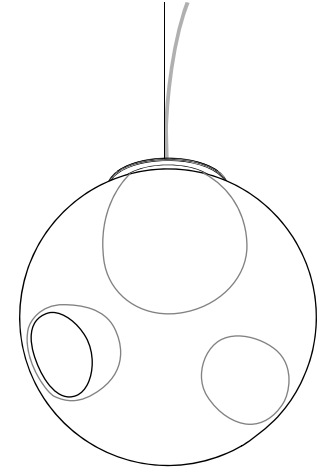
11

Slide the center cap onto the coaxial cable, gently insert the lamp into the pedant, then tighten the center cap connection by hand.

DO NOT OVERTIGHTEN.

Remove the protective film from the center cap after assembly.

Note: when using a dimmer use only low voltage electronic dimmer.



12

Clean fingerprints from surfaces.

For additional assistance, please contact Bocci:

Vancouver
sales@bocci.ca
www.bocci.ca

Berlin
europe@bocci.ca
www.bocci.ca

US Patent # D687,740
EU Patent # 001695834-001 to 004

Made in Vancouver, Canada



LOW VOLTAGE LUMINAIRE
E476186

SWAG

28.19

Design by Omer Arbel
PRODUCT INSTALLATION INSTRUCTIONS

© 2019, Bocci Design and Manufacturing Inc. All rights reserved. Any inquiries should be directed to: info@bocci.ca

BOCCI